

DIRECT COMPOSITE

Hands-On Course

POSTERIOR COMPOSITES
ANTERIOR COMPOSITES

DATE & VENUE

9TH & 10TH
APRIL 2022
THANE

BOOK YOUR SEAT



91 72084 95410



skilodontics@gmail.com

POWERED BY-

SKILLODONTICS

DR. VISHAL GUPTA



9TH APRIL 2022

POSTERIOR COMPOSITES

DOABLE, PREDICTABLE
& REPEATABLE

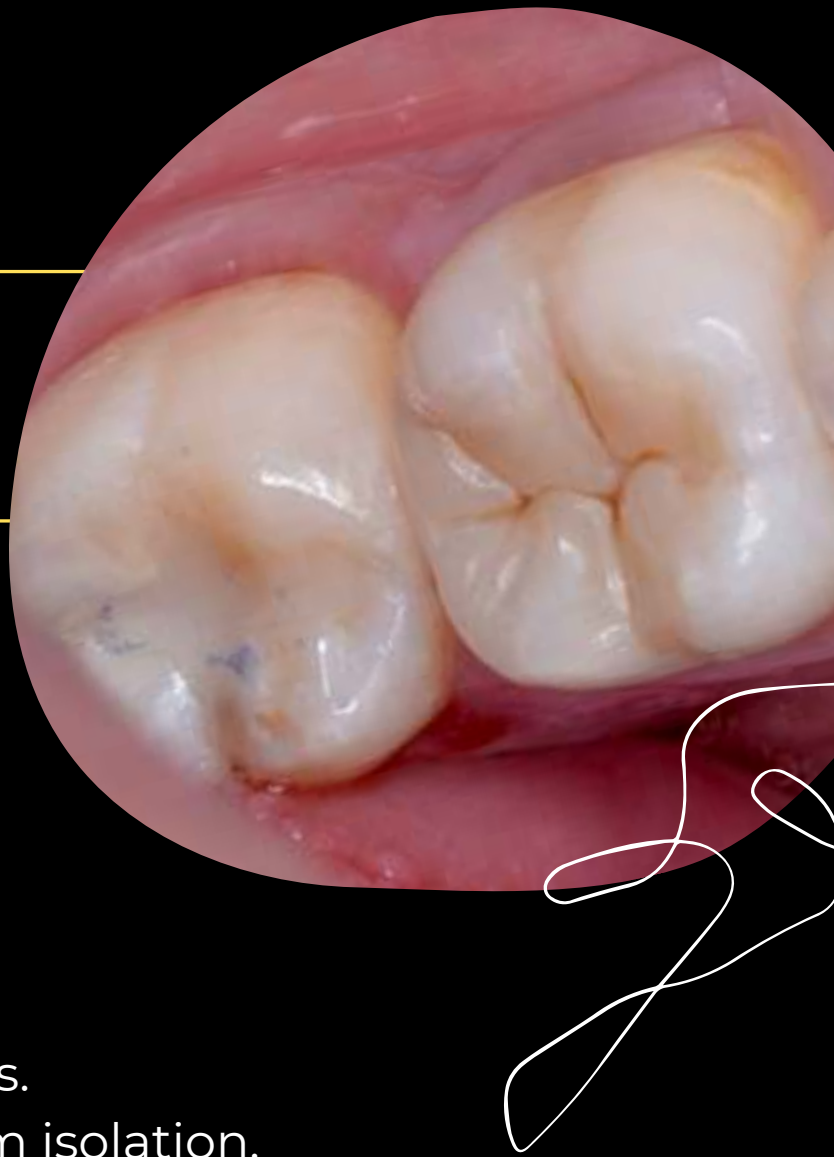
Topics

COVERED:

- Biomimetics concepts.
- Conservative prep designs.
- Importance of rubber dam isolation.
- Dentin bonding and post-op sensitivity.
- Managing polymerisation shrinkage stress.
- Armamentarium required for direct composites.
- Steps to biomimetic build up...occlusal anatomy.
- Different stratification techniques.
- Occlusal stains...how to use.
- Choosing the right matrix systems for Class II restorations.
- Choosing the right wedge.
- Predictable contacts and contours build up.
- Predictable steps to finishing and polishing.
- Clinical solutions to common problems.

HANDS-ON:

- Centripetal build up class II restoration





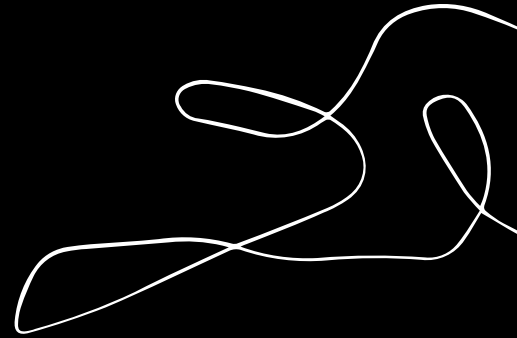
10TH APRIL 2022

ANTERIOR COMPOSITES

DOABLE, PREDICTABLE
& REPEATABLE

Topics COVERED:

- Aesthetic concepts: understanding optical aspects of natural teeth.
- Understanding color: Concepts of Hue, Chroma, Value, Opalescence, incisal halo, intensives, characterizations.
- Shade selection, guidelines for perfect color matching, how to make personalized shade guide and Button try technique.
- Layering: use of single / dual shades , two vs multiple layers , anatomical layering technique.
- Hiding the grey margins.
- Steps to simple yet predictable finishing and polishing with secondary and tertiary textures.





HANDS-ON:

- Layering technique and optimization of each layer for anterior class IV restoration.
- Putty index fabrication.
- Margin and prep design.
- Mimicking opalescence, incisal halo, intensives and characterisations.
- Textures, finishing and polishing.

There are many steps involved in the creation of a functional and aesthetic anterior composite restoration. This lecture and hands on course breaks down a number of the steps fundamental to obtaining excellent clinical outcomes with anterior composites.

Book Your Seat



-91 72084 95410



skilodontics@gmail.com

14 A SHREEJI ARCADE, OPP NITIN CO, ALMEIDA ROAD, PANCHPAKHADI,
THANE (WEST) 400602

POWERED BY- **SKILLODONTICS**